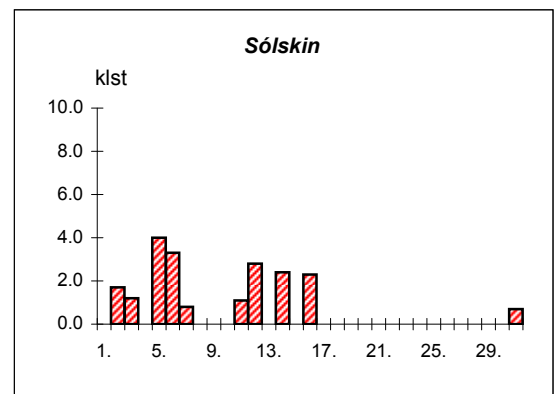
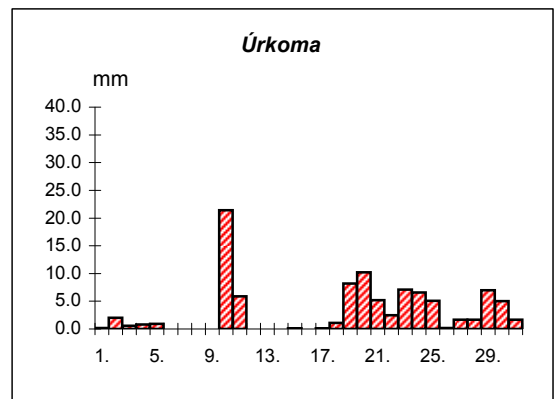
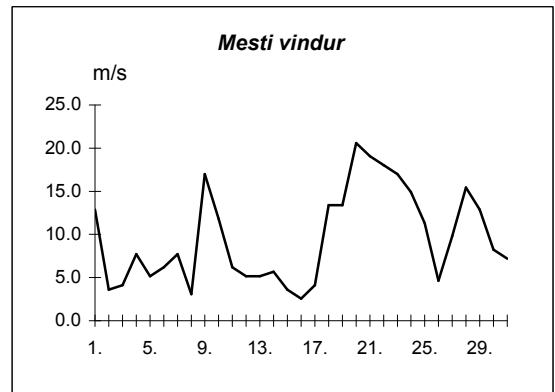
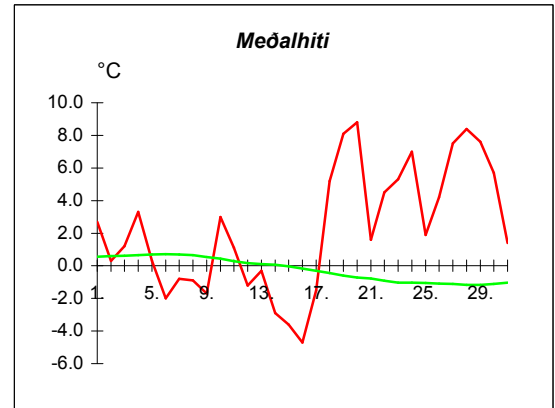


Reykjavík desember 2006

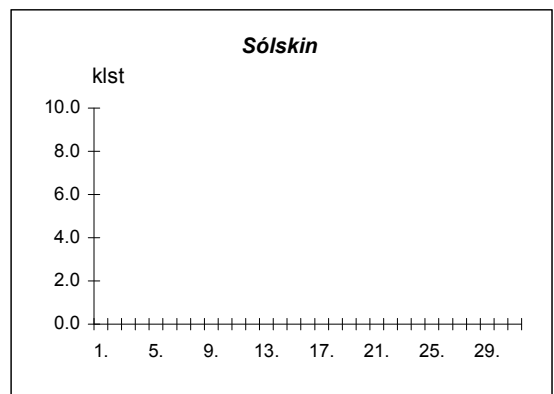
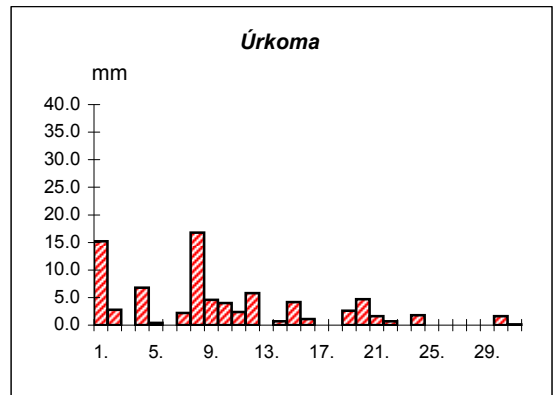
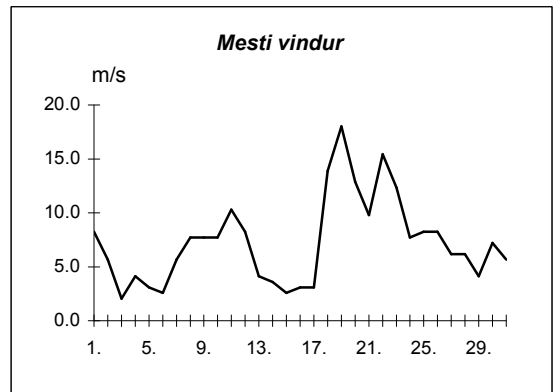
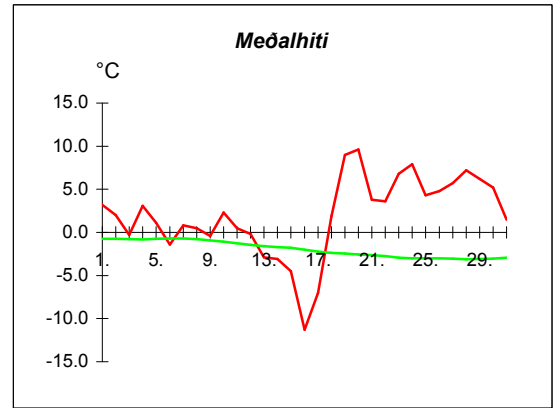
Dags	Meðalhiti (°C)	Hámark (°C)	Lágmark (°C)	Úrkoma (mm)	Úrkomutegund	Snjódýpt (cm)	Snjöhula (0-4)	Sólskin(klst)	Meðalvindur (m/s)	Mesti vindur (m/s)	Hviða (m/s)
1.	2.7	5.0	1.3	0.2	sl		0	0.0	6.2	12.9	35.0
2.	0.3	1.5	-2.1	2.0	sl		2	1.7	2.3	3.6	6.2
3.	1.2	3.5	-0.7	0.6	sn	5	4	1.2	1.4	4.1	5.7
4.	3.3	5.3	-0.9	0.8	ri	4	4	0.0	3.0	7.7	11.8
5.	0.3	5.0	-0.9	0.9	ri		0	4.0	1.7	5.1	8.8
6.	-2.0	0.2	-2.5	---			0	3.3	3.1	6.2	10.3
7.	-0.8	2.6	-4.7	---			0	0.8	2.0	7.7	11.8
8.	-0.9	1.5	-1.0	---			0	0.0	1.2	3.1	6.7
9.	-1.7	0.7	-6.3	---			0	0.0	5.9	17.0	30.4
10.	3.0	5.6	-0.9	21.4	sl		0	0.0	5.9	11.8	20.6
11.	1.1	3.6	-0.6	5.9	sl		0	1.1	3.6	6.2	10.3
12.	-1.2	1.5	-3.0	---			0	2.8	2.1	5.1	9.8
13.	-0.3	0.7	-2.4	0.0			0	0.0	3.4	5.1	8.2
14.	-2.9	0.2	-5.3	0.0			2	2.4	2.7	5.7	8.2
15.	-3.6	-1.2	-5.7	0.1	sn	1	4	0.0	1.7	3.6	5.1
16.	-4.7	-1.6	-6.4	---		1	4	2.3	1.5	2.6	3.6
17.	-1.5	0.6	-6.7	0.1	sn		2	0.0	2.0	4.1	6.2
18.	5.2	8.5	-2.7	1.1	sn		2	0.0	6.4	13.4	21.1
19.	8.1	9.5	5.4	8.2	ri		0	0.0	8.4	13.4	20.1
20.	8.8	10.2	8.6	10.2	ri		0	0.0	10.6	20.6	27.8
21.	1.6	10.9	0.2	5.2	sl		0	0.0	11.0	19.0	30.4
22.	4.5	6.4	-0.5	2.5	sl		0	0.0	8.4	18.0	30.4
23.	5.3	9.8	3.3	7.1	ri		0	0.0	7.0	17.0	28.3
24.	7.0	10.1	3.6	6.6	ri		0	0.0	7.7	14.9	22.7
25.	1.9	5.6	-0.6	5.1	sl	1	4	0.0	4.4	11.3	16.5
26.	4.2	4.6	2.4	0.2	sl		0	0.0	2.8	4.6	8.2
27.	7.5	8.2	4.0	1.7	ri		0	0.0	6.6	9.8	17.5
28.	8.4	9.1	6.9	1.7	ri		0	0.0	10.0	15.4	23.7
29.	7.6	9.4	6.4	7.0	ri		0	0.0	4.8	12.9	19.0
30.	5.7	7.8	5.2	5.0	ri		0	0.0	4.3	8.2	12.9
31.	1.4	5.7	-0.4	1.7	sl		0	0.7	2.8	7.2	10.3

Meðalhiti	=	2.2 °C
Frávik frá meðaltali 1931-60	=	1.3 °C
Meðalhámarkshiti	=	4.9 °C
Meðallágmarkshiti	=	-0.2 °C
Úrkomumagn	=	95.3 mm
Hlutfall úrkomu af meðaltali 1931-60	=	118.0 %
Meðalvindhraði	=	4.7 m/s
Sólskinsstundir	=	20.3 klst



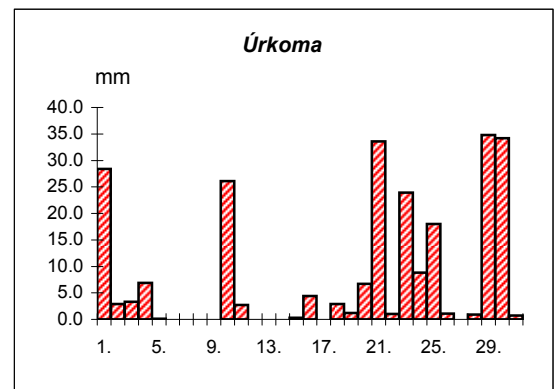
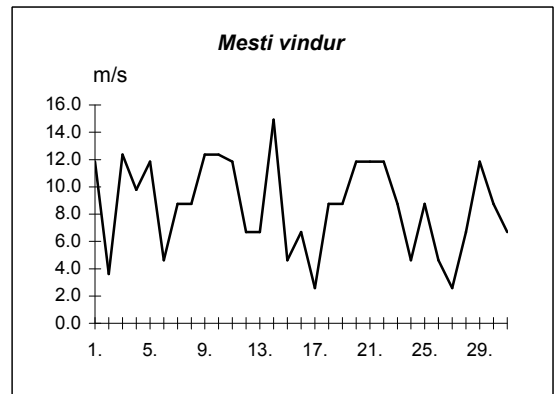
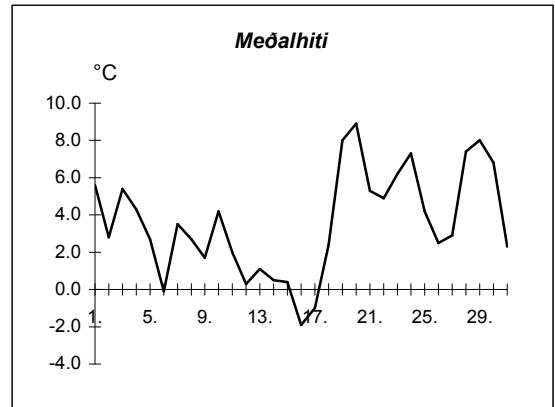
Akureyri desember 2006

Dags	Meðalhiti (°C)	Hámark (°C)	Lágmark (°C)	Úrkoma (mm)	Úrkomutegund	Snjódýpt (cm)	Snjöhula (0-4)	Sólskin(klst)	Meðalvindur (m/s)	Mesti vindur (m/s)	Hviða (m/s)
1.	3.2	5.2	0.4	15.2	sl	17	2	0.0	3.0	8.2	12.9
2.	2.0	4.5	1.7	2.8	ri	16	2	0.0	1.6	5.7	10.8
3.	-0.3	2.4	-2.9	---		16	2	0.0	0.8	2.1	5.1
4.	3.1	4.7	0.0	6.8	ri	14	2	0.0	1.4	4.1	8.2
5.	1.1	3.2	0.4	0.4	sl	14	2	0.0	1.3	3.1	6.2
6.	-1.4	0.4	-3.1	0.0		14	2	0.0	1.0	2.6	4.6
7.	0.8	2.1	-3.1	2.2	sl	15	2	0.0	3.1	5.7	9.3
8.	0.5	1.7	0.2	16.8	sl	28	4	0.0	3.8	7.7	11.3
9.	-0.4	0.8	-2.9	4.6	sl	31	4	0.0	2.3	7.7	10.8
10.	2.3	5.4	-2.5	4.0	sl	25	4	0.0	2.3	7.7	15.4
11.	0.5	3.0	-1.4	2.4	sn	26	4	0.0	3.5	10.3	16.0
12.	-0.2	2.5	-0.7	5.8	sn	29	4	0.0	3.1	8.2	12.4
13.	-2.9	-0.7	-3.3	0.0		27	4	0.0	1.3	4.1	8.8
14.	-3.1	-1.4	-4.3	0.7	sn	27	4	0.0	1.4	3.6	5.7
15.	-4.5	-2.0	-4.5	4.2	sn	30	4	0.0	1.2	2.6	5.1
16.	-11.3	-1.9	-12.9	1.1	sn	32	4	0.0	1.1	3.1	4.6
17.	-7.0	-2.8	-12.3	---		32	4	0.0	1.3	3.1	5.7
18.	1.9	10.1	-10.1	---		30	4	0.0	5.4	13.9	24.7
19.	9.0	12.6	3.3	2.6	ri		0	0.0	7.9	18.0	29.9
20.	9.6	13.2	7.8	4.7	ri		0	0.0	7.2	12.9	26.8
21.	3.8	11.3	2.1	1.6	ri		0	0.0	4.8	9.8	18.0
22.	3.6	4.7	-0.2	0.7	sl	2	2	0.0	4.4	15.4	32.9
23.	6.8	10.4	2.1	0.0			0	0.0	5.7	12.4	28.8
24.	7.9	11.5	3.3	1.8	ri		0	0.0	4.1	7.7	14.9
25.	4.3	9.0	2.4	0.0			0	0.0	4.3	8.2	16.5
26.	4.8	7.0	2.6	0.0			0	0.0	3.3	8.2	16.0
27.	5.7	8.2	3.2	---			0	0.0	2.8	6.2	10.8
28.	7.2	8.6	3.6	---			0	0.0	2.8	6.2	11.3
29.	6.2	9.1	4.0	---			0	0.0	1.2	4.1	8.8
30.	5.2	8.5	4.5	1.6	ri		0	0.0	3.0	7.2	12.9
31.	1.5	6.5	0.0	0.1	ri		0	0.0	3.0	5.7	8.2



Meðalhiti	=	1.9 °C
Frávik frá meðaltali 1931-60	=	2.4 °C
Meðalhámarkshiti	=	5.1 °C
Meðallágmarkshiti	=	-0.7 °C
Úrkomumagn	=	80.1 mm
Hlutfall úrkomu af meðaltali 1931-60	=	148.0 %
Meðalvindhraði	=	3.0 m/s
Sólskinsstundir	=	0.0 klst

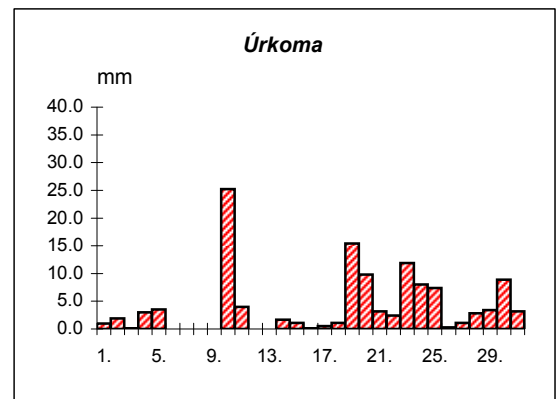
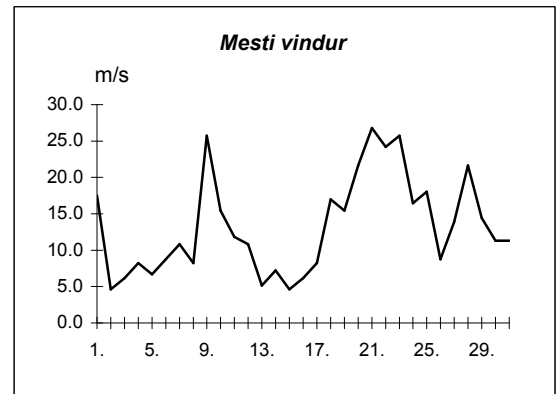
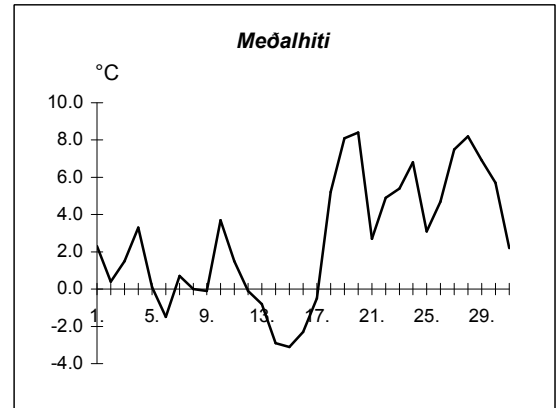
Dags	Meðalhiti (°C)	Hámark (°C)	Lágmark (°C)	Úrkoma (mm)	Úrkomutegund	Snjódýpt (cm)	Snjöhula (0-4)	Sólskin(klst)	Meðalvindur (m/s)	Mesti vindur (m/s)	Hviða (m/s)
1.	5.6	7.4	4.7	28.4	ri		0		6.6	11.8	
2.	2.8	5.8	1.9	2.9	ri		0		1.9	3.6	
3.	5.4	6.7	0.2	3.3	ri		0		7.6	12.4	
4.	4.3	6.6	2.4	6.9	ri		0		6.6	9.8	
5.	2.7	4.4	2.0	0.1	ri		0		6.6	11.8	
6.	-0.1	2.9	-0.9	---			0		4.0	4.6	
7.	3.5	5.2	-0.7	---			0		6.2	8.8	
8.	2.7	5.2	1.5	---			0		7.5	8.8	
9.	1.7	4.2	-1.2	---			0		3.8	12.4	
10.	4.2	7.2	0.8	26.1	sl		0		4.8	12.4	
11.	2.0	4.2	0.3	2.7	sl		0		5.9	11.8	
12.	0.3	3.2	-1.7	0.0			0		2.0	6.7	
13.	1.1	2.1	-0.4	0.0		0	2		2.3	6.7	
14.	0.5	3.5	-1.5	0.0		0	2		8.7	14.9	
15.	0.4	1.7	-0.6	0.3	sn	2	4		1.4	4.6	
16.	-1.9	1.5	-5.4	4.4	sn	8	4		3.6	6.7	
17.	-1.0	1.2	-6.0	---		7	4		1.1	2.6	
18.	2.4	5.2	-1.8	2.9	sl	5	4		2.9	8.8	
19.	8.0	9.7	5.1	1.2	ri		0		6.0	8.8	
20.	8.9	9.4	8.1	6.7	ri		0		8.1	11.8	
21.	5.3	9.5	1.9	33.6	ri		0		8.4	11.8	
22.	4.9	6.0	1.5	1.0	sl		0		5.4	11.8	
23.	6.2	9.0	1.3	23.9	ri		0		6.2	8.8	
24.	7.3	8.9	2.7	8.8	ri		0		1.7	4.6	
25.	4.2	8.7	2.8	18.0	ri		0		5.6	8.8	
26.	2.5	5.6	-0.9	1.1	ri		0		0.9	4.6	
27.	2.9	5.2	1.4	---			0		0.3	2.6	
28.	7.4	7.8	2.6	0.9	ri		0		3.6	6.7	
29.	8.0	8.5	6.6	34.8	ri		0		6.3	11.8	
30.	6.8	8.5	6.1	34.2	ri		0		5.1	8.8	
31.	2.3	6.8	0.1	0.7	ri		0		2.7	6.7	



Meðalhiti	=	3.6 °C
Meðalhámarkshiti	=	5.9 °C
Meðallágmarkshiti	=	1.1 °C
Úrkomumagn	=	242.9 mm
Meðalvindhraði	=	4.6 m/s

Útgefandi : Veðurstofa Íslands  
 Heimilisfang : Bústaðavegur 9  
 150 Reykjavík

Dags	Meðalhiti (°C)	Hámark (°C)	Lágmark (°C)	Úrkoma (mm)	Úrkomutegund	Snjódýpt (cm)	Snjöhula (0-4)	Sólskin(klást)	Meðalvindur (m/s)	Mesti vindur (m/s)	Hviða (m/s)
1.	2.3	3.6	0.5	1.0	sl		0		10.1	17.5	22.7
2.	0.4	3.7	-1.1	1.9	sl	1	4		2.3	4.6	6.7
3.	1.5	3.6	-0.4	0.1	ri	1	2		3.4	6.2	7.2
4.	3.3	5.7	-1.0	3.0	sl		0		4.8	8.2	11.8
5.	0.1	5.5	-1.4	3.5	ri		0		2.4	6.7	8.8
6.	-1.5	1.7	-2.8	---			0		4.8	8.8	11.8
7.	0.7	2.5	-2.4	---			0		7.6	10.8	13.4
8.	0.0	3.2	-0.3	---			0		5.9	8.2	11.3
9.	-0.1	1.7	-5.3	---			0		8.8	25.7	34.0
10.	3.7	6.2	-1.9	25.2	sl		0		9.2	15.4	22.1
11.	1.5	4.3	0.8	4.0	sl		0		6.9	11.8	14.9
12.	-0.1	2.6	-1.1	---			0		5.5	10.8	12.9
13.	-0.8	2.3	-3.3	---			0		3.1	5.1	6.2
14.	-2.9	1.1	-4.2	1.7	sn	4	4		4.6	7.2	8.8
15.	-3.1	-1.1	-4.7	1.1	sn	5	4		2.6	4.6	5.7
16.	-2.3	-0.3	-5.7	0.1	sn	8	4		3.0	6.2	7.2
17.	-0.5	1.2	-2.0	0.5	sn	8	4		4.3	8.2	10.3
18.	5.2	8.4	-1.9	1.1	sl		2		10.6	17.0	22.1
19.	8.1	9.4	5.2	15.4	ri		0		11.0	15.4	23.7
20.	8.4	9.9	8.0	9.8	ri		0		13.6	21.6	29.3
21.	2.7	10.7	0.3	3.2	ri		0		18.7	26.8	39.1
22.	4.9	7.3	1.3	2.4	sl	0	2		12.0	24.2	31.4
23.	5.4	10.4	2.6	11.9	ri		0		13.5	25.7	38.1
24.	6.8	9.7	3.0	8.0	ri		0		9.6	16.5	22.7
25.	3.1	6.5	0.3	7.4	sl	1	4		8.7	18.0	23.2
26.	4.7	5.3	2.8	0.3	sl		0		5.1	8.8	11.8
27.	7.5	8.0	4.7	1.1	ri		0		9.7	13.9	19.0
28.	8.2	10.1	6.9	2.8	ri		0		13.3	21.6	28.8
29.	6.9	9.1	6.2	3.4	ri		0		8.8	14.4	20.1
30.	5.7	7.1	5.1	8.9	ri		0		6.2	11.3	15.4
31.	2.2	6.3	0.1	3.2	ri		0		4.8	11.3	14.9



Meðalhiti	=	2.6 °C
Frávik frá meðaltali 1931-60	=	1.4 °C
Meðalhámarkshiti	=	5.4 °C
Meðallágmarkshiti	=	0.3 °C
Úrkomumagn	=	121.0 mm
Hlutfall úrkomu af meðaltali 1931-60	=	103.0 %
Meðalvindhraði	=	7.6 m/s