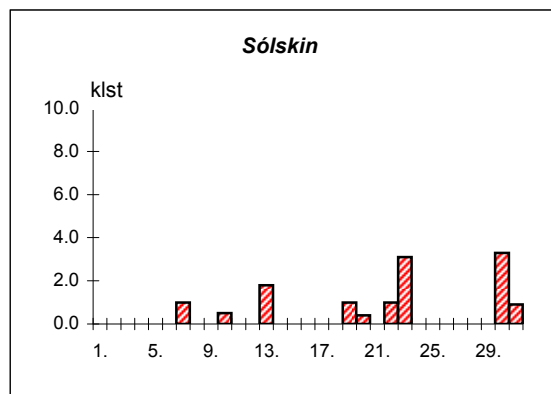
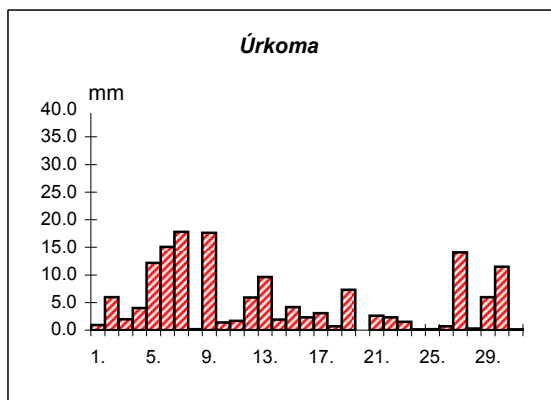
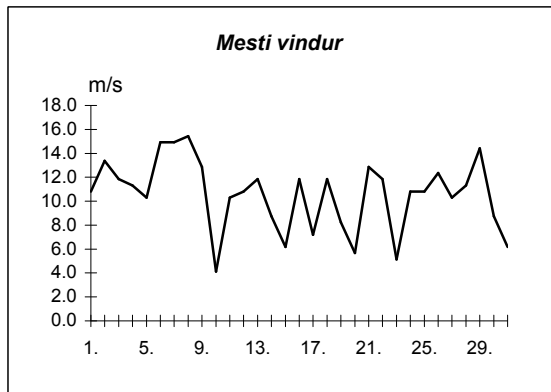
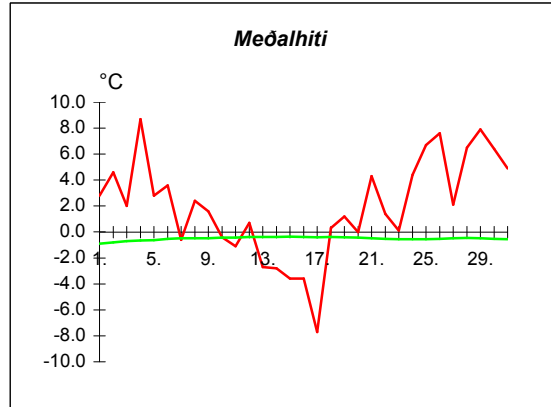
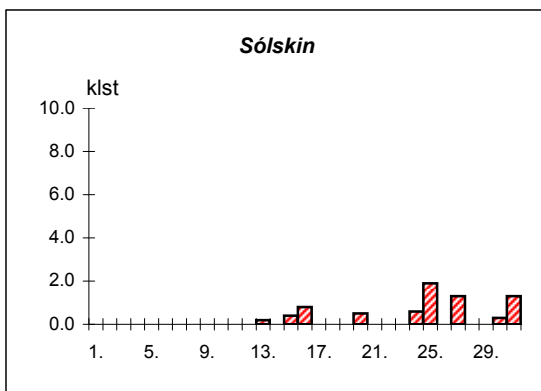
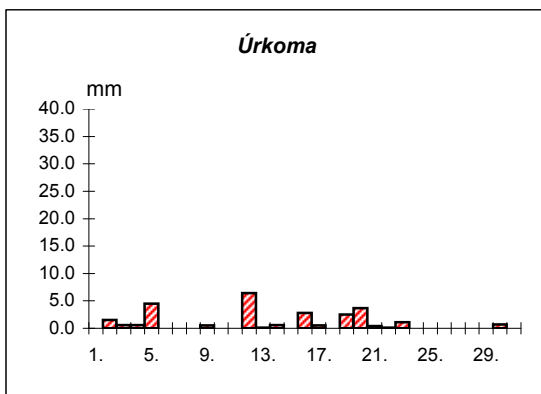
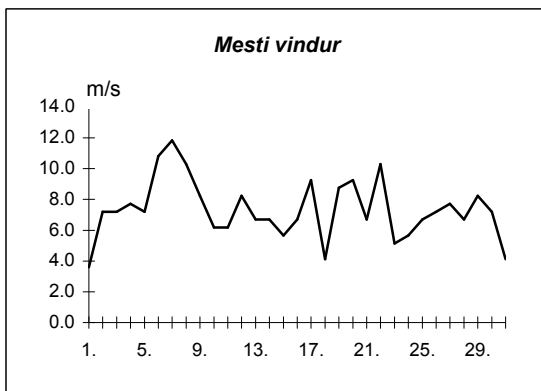
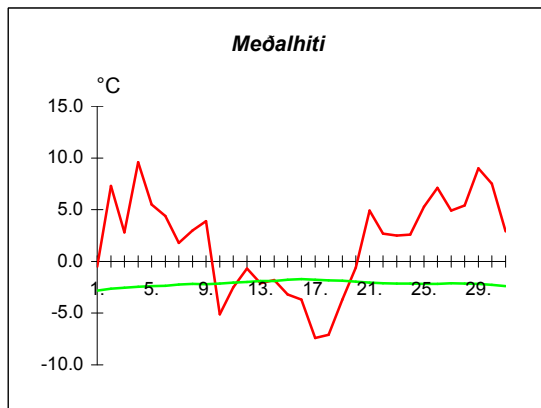


Dags	Meðalhiti (°C)	Hámark (°C)	Lágmark (°C)	Úrkoma (mm)	Úrkomutegund	Snjóþýpt (cm)	Snjóhula (0-4)	Sólskin(klst)	Meðalvindur (m/s)	Mesti vindur (m/s)	Hvíða (m/s)
1.	2.8	6.7	-2.1	0.9	sl		2	0.0	5.6	10.8	16.0
2.	4.6	8.6	1.5	6.0	sl		0	0.0	8.5	13.4	21.1
3.	2.0	3.0	-1.9	2.0	sl	0	2	0.0	7.4	11.8	18.0
4.	8.7	9.3	2.0	4.0	sl		0	0.0	8.5	11.3	19.6
5.	2.8	8.8	0.0	12.2	ri		0	0.0	5.7	10.3	17.0
6.	3.6	5.2	-0.2	15.1	sl	6	2	0.0	11.5	14.9	24.7
7.	-0.6	6.0	-2.0	17.8	sl		0	1.0	5.6	14.9	23.2
8.	2.4	2.8	-1.4	0.2	sn	2	4	0.0	7.7	15.4	22.1
9.	1.6	6.1	-0.5	17.6	sl		0	0.0	5.4	12.9	18.0
10.	-0.4	0.3	-1.3	1.4	sl		0	0.5	2.6	4.1	6.2
11.	-1.1	1.9	-2.9	1.7	sn	1	4	0.0	5.7	10.3	15.4
12.	0.7	5.0	-2.7	5.9	sl		2	0.0	5.1	10.8	17.5
13.	-2.7	0.1	-4.4	9.6	sn	14	4	1.8	4.9	11.8	17.0
14.	-2.8	-1.0	-6.0	1.9	sn	14	4	0.0	4.0	8.8	13.9
15.	-3.6	-0.9	-6.2	4.2	sn	18	4	0.0	2.6	6.2	14.4
16.	-3.6	-1.4	-5.3	2.3	sn		0	0.0	5.7	11.8	17.0
17.	-7.7	-3.8	-10.7	3.1	sn	19	4	0.0	3.6	7.2	10.3
18.	0.3	3.2	-11.4	0.7	sl	16	4	0.0	4.4	11.8	17.5
19.	1.2	2.8	-0.4	7.3	sl	12	4	1.0	2.8	8.2	13.4
20.	0.0	2.0	-3.2	0.0		12	4	0.4	3.1	5.7	8.8
21.	4.3	5.8	-0.1	2.6	sl	8	4	0.0	6.4	12.9	20.6
22.	1.4	6.8	0.3	2.3	ri	2	2	1.0	6.7	11.8	19.6
23.	0.1	1.9	-1.4	1.5	sl	4	4	3.1	2.3	5.1	9.8
24.	4.4	5.9	-1.6	0.1	sl		0	0.0	6.2	10.8	15.4
25.	6.7	7.5	5.0	0.2	ri		0	0.0	7.7	10.8	16.0
26.	7.6	8.1	6.8	0.7	ri		0	0.0	8.8	12.4	18.0
27.	2.1	7.8	1.0	14.1	sl		0	0.0	1.9	10.3	14.9
28.	6.5	8.4	-0.7	0.3	ri		0	0.0	6.6	11.3	18.5
29.	7.9	8.6	6.1	6.0	ri		0	0.0	8.2	14.4	21.6
30.	6.4	8.8	5.4	11.5	ri		0	3.3	4.8	8.8	12.9
31.	4.9	5.6	3.0	0.1	ri		0	0.9	3.0	6.2	11.3



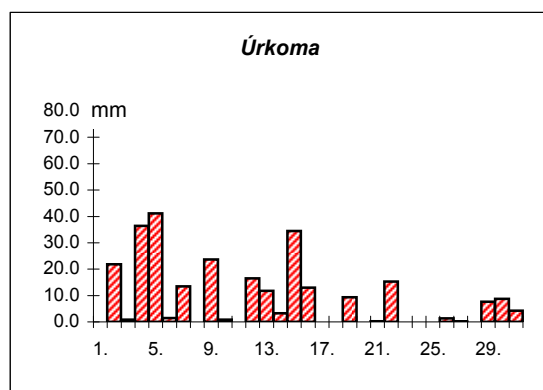
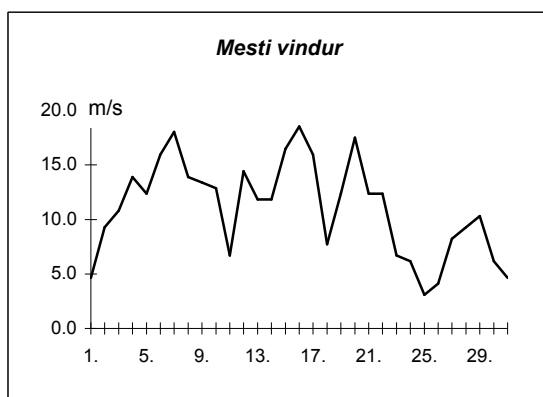
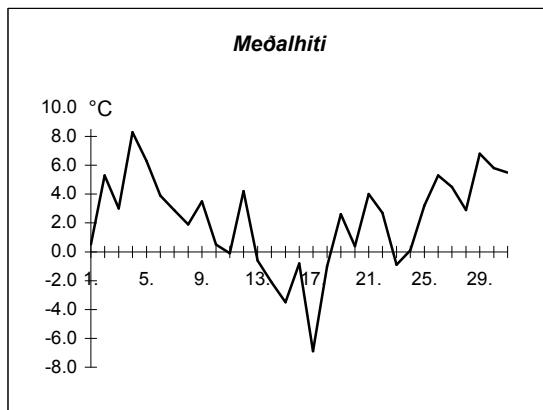
Meðalhiti	=	2.0 °C
Frávik frá meðaltali 1931-60	=	2.4 °C
Meðalhámarkshiti	=	4.5 °C
Meðallágmarkshiti	=	-1.1 °C
Úrkomumagn	=	153.3 mm
Hlutfall úrkomu af meðaltali 1931-60	=	170.0 %
Meðalvindhraði	=	5.6 m/s
Sólskinsstundir	=	13.0 klst

Dags	Meðalhiti (°C)	Hámark (°C)	Lágmark (°C)	Úrkoma (mm)	Úrkomutegund	Snjóþýpt (cm)	Snjóhula (0-4)	Sólskin(klst)	Meðalvindur (m/s)	Mesti vindur (m/s)	Hvíða (m/s)
1.	-0.5	1.0	-2.0	-	-	-	0	0.0	1.5	3.6	6.7
2.	7.3	10.0	-1.0	1.5	sl	-	0	0.0	4.6	7.2	15.4
3.	2.8	6.0	1.2	0.6	ri	-	0	0.0	4.3	7.2	13.9
4.	9.6	10.7	3.2	0.6	sl	-	0	0.0	5.4	7.7	15.4
5.	5.5	11.1	3.6	4.5	ri	-	0	0.0	4.2	7.2	13.4
6.	4.4	6.5	0.2	-	-	-	0	0.0	6.7	10.8	19.6
7.	1.8	9.1	-0.7	0.0	-	-	0	0.0	5.2	11.8	22.1
8.	3.0	3.4	-0.8	0.0	-	-	0	0.0	6.2	10.3	20.6
9.	3.9	7.7	2.6	0.5	ri	-	0	0.0	2.9	8.2	14.9
10.	-5.1	4.5	-6.5	-	-	-	0	0.0	1.3	6.2	10.3
11.	-2.5	-0.2	-6.0	-	-	-	0	0.0	2.1	6.2	12.4
12.	-0.7	6.4	-2.8	6.4	sn	10	4	0.0	3.9	8.2	14.4
13.	-2.1	0.0	-5.3	0.1	sn	5	4	0.2	3.3	6.7	11.8
14.	-1.8	-0.9	-4.8	0.6	sn	5	4	0.0	3.5	6.7	12.9
15.	-3.2	-0.5	-5.6	-	-	5	4	0.4	2.9	5.7	9.3
16.	-3.7	-1.7	-5.0	2.8	sl	10	4	0.8	2.2	6.7	11.8
17.	-7.4	-3.0	-8.0	0.5	sn	12	4	0.0	5.8	9.3	13.9
18.	-7.1	-6.4	-9.3	0.0	-	12	4	0.0	2.1	4.1	5.7
19.	-3.7	-1.2	-8.4	2.5	sn	12	4	0.0	2.8	8.8	13.9
20.	-0.6	0.8	-2.0	3.7	sn	14	4	0.5	4.1	9.3	14.9
21.	4.9	7.0	-1.4	0.4	sl	12	4	0.0	2.8	6.7	13.9
22.	2.7	7.1	1.5	0.1	sl	10	2	0.0	4.7	10.3	22.1
23.	2.5	3.8	0.6	1.1	sn	5	2	0.0	2.6	5.1	11.3
24.	2.6	6.6	-1.4	0.0	-	5	2	0.6	3.0	5.7	9.8
25.	5.3	7.5	2.0	-	-	0	1.9	4.9	6.7	12.4	
26.	7.1	8.5	4.8	-	-	0	0.0	4.6	7.2	14.4	
27.	4.9	8.5	3.6	-	-	0	1.3	4.2	7.7	13.9	
28.	5.4	9.0	-0.2	-	-	0	0.0	3.3	6.7	11.8	
29.	9.0	11.0	7.3	0.0	-	0	0.0	4.9	8.2	16.0	
30.	7.5	10.5	6.2	0.7	sl	-	0	0.3	3.8	7.2	13.4
31.	2.9	8.2	1.8	-	-	0	1.3	2.0	4.1	6.7	



Meðalhiti	=	1.8 °C
Frávik frá meðaltali 1931-60	=	3.3 °C
Meðalhámarkshiti	=	4.9 °C
Meðallágmarkshiti	=	-1.1 °C
Úrkomumagn	=	26.6 mm
Hlutfall úrkomu af meðaltali 1931-60	=	59.0 %
Meðalvindhraði	=	3.7 m/s
Sólskinsstundir	=	7.3 klst

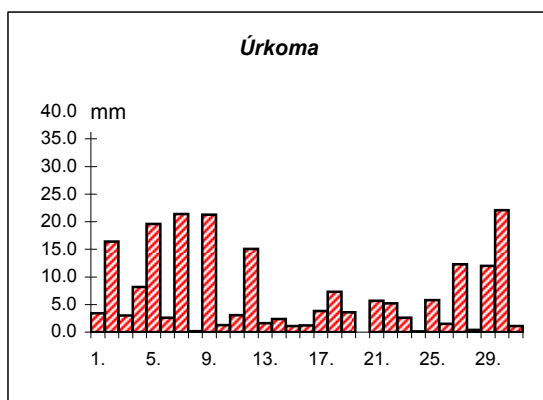
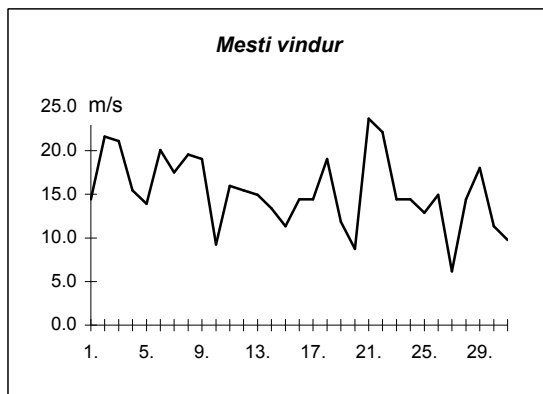
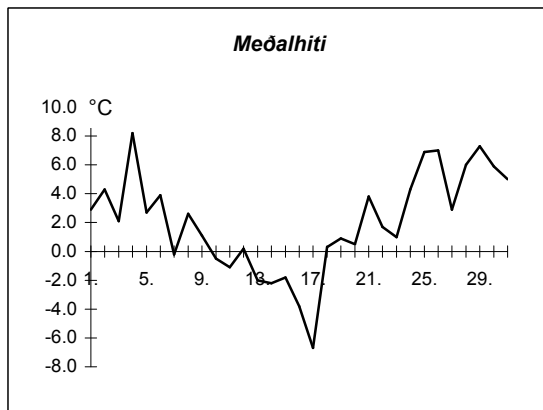
Dags	Meðalhiti (°C)	Hámark (°C)	Lágmark (°C)	Úrkoma (mm)	Úrkomutegund	Snjóþýpt (cm)	Snjóhula (0-4)	Sólskin(Klst)	Meðalvindur (m/s)	Mesti vindur (m/s)	Hvíða (m/s)
1.	0.5	2.2	-2.2	- - -			0		2.0	4.6	5.7
2.	5.3	7.7	1.1	21.8	sl		0		5.7	9.3	15.4
3.	3.0	4.7	1.2	0.9	ri		0		6.4	10.8	16.5
4.	8.3	9.2	4.0	36.4	ri		0		7.4	13.9	18.0
5.	6.3	9.3	4.3	41.2	ri		0		6.4	12.4	17.5
6.	3.9	5.9	-0.5	1.5	sl		0		8.7	16.0	21.1
7.	2.9	7.4	0.0	13.5	ri		0		5.9	18.0	24.7
8.	1.9	3.5	-2.3	0.0			0		5.5	13.9	19.0
9.	3.5	7.3	2.0	23.7	sl		0		4.1	13.4	19.0
10.	0.5	5.0	-1.0	0.9	ri		0		5.3	12.9	18.0
11.	-0.1	2.4	-2.5	0.0		1	2		3.0	6.7	9.3
12.	4.2	7.0	-1.0	16.5	ri		0		7.2	14.4	22.1
13.	-0.6	4.1	-2.7	11.8	sl	1	4		3.3	11.8	15.4
14.	-2.1	1.2	-5.7	3.3	sl	3	4		3.6	11.8	18.0
15.	-3.5	3.0	-7.6	34.5	sl	12	4		6.0	16.5	22.1
16.	-0.8	4.8	-6.8	13.0	sl	15	4		10.5	18.5	24.7
17.	-6.9	-3.2	-8.0	- - -		10	4		9.6	16.0	24.2
18.	-1.0	3.5	-8.2	0.0		10	4		3.0	7.7	11.8
19.	2.6	3.8	1.2	9.4	sl	10	4		4.8	12.4	18.5
20.	0.4	5.4	-1.4	- - -		9	4		5.6	17.5	23.7
21.	4.0	5.9	-1.4	0.3	ri	9	4		4.0	12.4	16.0
22.	2.7	6.5	1.2	15.3	sl	5	2		7.9	12.4	18.5
23.	-0.9	3.2	-2.4	0.0		2	2		1.8	6.7	10.3
24.	0.1	2.0	-3.7	- - -		2	2		2.6	6.2	7.7
25.	3.2	4.3	0.7	- - -		2	2		1.6	3.1	4.6
26.	5.3	6.2	2.4	1.3	ri	1	2		1.8	4.1	4.6
27.	4.5	7.2	3.3	0.1	ri	1	2		2.0	8.2	10.8
28.	2.9	6.4	-1.3	0.0			2		3.6	9.3	12.4
29.	6.8	7.4	5.7	7.6	ri		0		6.2	10.3	13.9
30.	5.8	7.7	4.1	8.8	ri		0		2.5	6.2	6.2
31.	5.5	7.1	3.9	4.3	ri		0		1.5	4.6	4.1



Meðalhiti	=	2.2 °C
Meðalhámarkshiti	=	5.1 °C
Meðallágmarkshiti	=	-0.8 °C
Úrkomumagn	=	266.1 mm
Meðalvindhraði	=	4.8 m/s

Útgefandi : **Veðurstofa Íslands**
 Heimilisfang : **Bústaðavegur 9**
150 Reykjavík

Dags	Meðalhiti (°C)	Hámark (°C)	Lágmark (°C)	Úrkoma (mm)	Úrkomutegund	Snjóþýpt (cm)	Snjóhula (0-4)	Sóliskín(klást)	Meðalvindur (m/s)	Mesti vindur (m/s)	Hvíða (m/s)
1.	2.9	6.3	-2.4	3.4	sl	2	4		8.9	14.4	21.1
2.	4.3	8.3	2.0	16.4	sl		0		12.9	21.6	26.8
3.	2.1	3.5	-1.1	3.0	sl	1	2		13.1	21.1	26.8
4.	8.2	8.9	2.1	8.2	sl		0		11.2	15.4	20.1
5.	2.7	8.4	1.0	19.6	sl		0		8.8	13.9	22.1
6.	3.9	5.7	-0.7	2.6	sl	0	2		14.2	20.1	29.3
7.	-0.2	6.9	-1.4	21.4	sl		0		9.4	17.5	22.1
8.	2.6	3.2	-1.3	0.2	sn	3	4		11.0	19.6	27.8
9.	1.1	6.4	-0.6	21.3	sl		0		7.7	19.0	25.2
10.	-0.5	1.1	-1.3	1.3	sl	1	2		4.7	9.3	10.8
11.	-1.1	1.2	-2.5	3.1	sn	1	2		8.8	16.0	21.6
12.	0.2	3.6	-3.0	15.1	sl	8	4		7.0	15.4	20.1
13.	-2.0	0.7	-3.6	1.6	sl	12	4		10.6	14.9	19.6
14.	-2.2	0.2	-3.9	2.4	sn	10	4		9.0	13.4	18.5
15.	-1.8	0.3	-4.4	1.1	sn	16	4		4.9	11.3	14.9
16.	-3.8	-0.8	-6.2	1.2	sn	17	4		10.5	14.4	18.5
17.	-6.7	-3.8	-7.8	3.8	sn	25	4		5.4	14.4	20.1
18.	0.3	3.7	-9.4	7.3	sl	21	4		7.3	19.0	25.2
19.	0.9	3.8	0.2	3.6	sl	10	2		5.2	11.8	16.0
20.	0.5	2.7	-2.4	0.0		10	2		4.9	8.8	11.8
21.	3.8	5.5	1.0	5.7	ri	15	2		9.0	23.7	31.9
22.	1.7	6.8	0.2	5.2	sl	3	2		11.9	22.1	26.3
23.	1.0	2.8	-1.4	2.6	sl	4	2		4.7	14.4	19.0
24.	4.3	5.5	-0.6	0.1	sl		0		10.9	14.4	19.6
25.	6.9	7.6	4.8	5.8	ri		0		10.8	12.9	17.5
26.	7.0	8.1	7.0	1.5	ri		0		11.0	14.9	20.6
27.	2.9	8.3	2.0	12.3	ri		0		3.6	6.2	8.2
28.	6.0	8.0	0.0	0.4	ri		0		9.4	14.4	20.6
29.	7.3	8.3	4.9	12.0	ri		0		9.8	18.0	24.7
30.	5.9	8.3	4.3	22.1	ri		0		6.6	11.3	16.0
31.	5.0	6.7	3.1	1.1	ri		0		4.9	9.8	13.4



Meðalhiti	=	2.0 °C
Frávik frá meðaltali 1931-60	=	1.9 °C
Meðalhámarkshiti	=	4.7 °C
Meðallágmarkshiti	=	-0.7 °C
Úrkomumagn	=	205.4 mm
Hlutfall úrkomu af meðaltali 1931-60	=	196.0 %
Meðalvindhraði	=	8.6 m/s