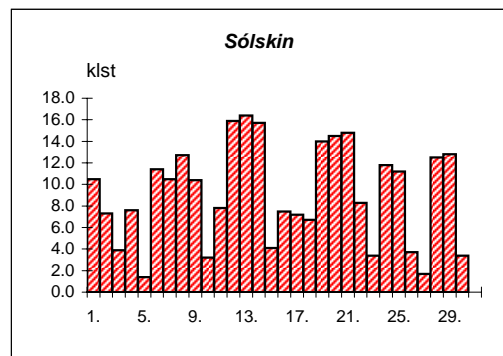
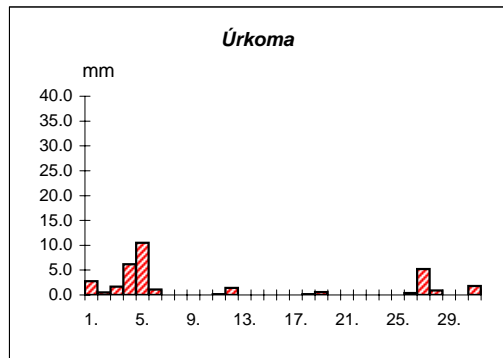
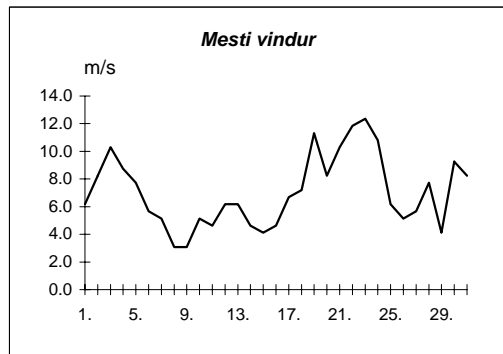
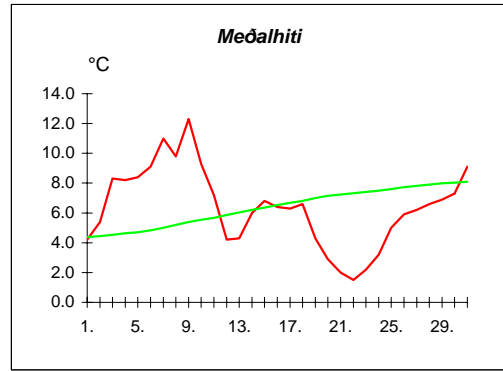


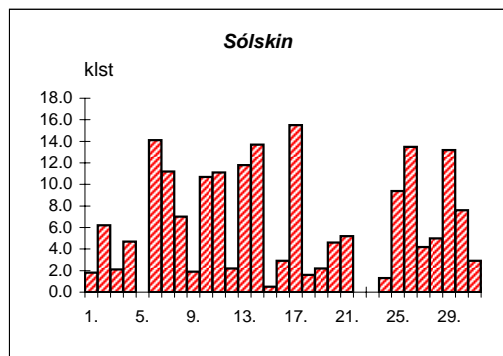
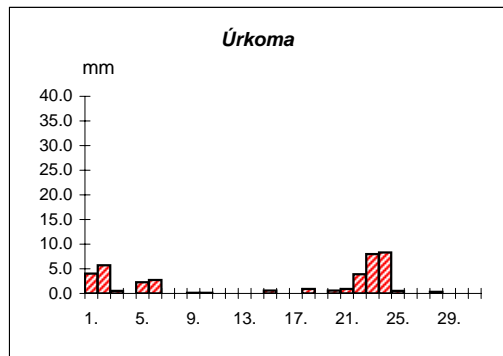
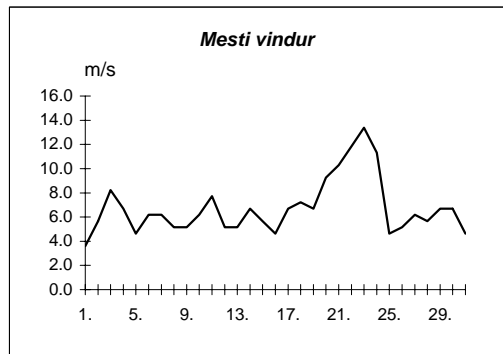
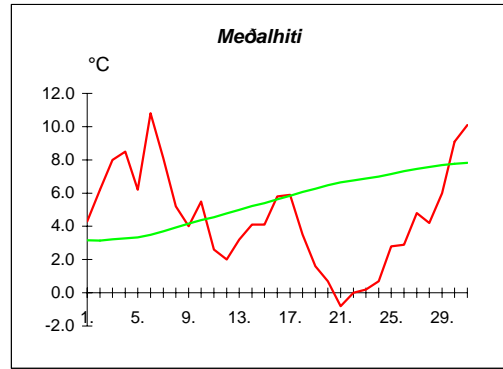
Dags	Meðalhiti (°C)	Hámark (°C)	Lágmark (°C)	Úrkoma (mm)	Úrkomutegund	Snjódýpt (cm)	Snjöhula (0-4)	Sólskin(klst)	Meðalvindur (m/s)	Mesti vindur (m/s)	Hviða (m/s)
1.	4.2	7.7	1.4	2.8	ri		0	10.5	2.2	6.2	10.3
2.	5.4	9.6	0.6	0.5	ri		0	7.3	3.5	8.2	12.9
3.	8.3	11.7	6.0	1.7	ri		0	3.9	6.2	10.3	16.5
4.	8.2	12.2	5.8	6.2	ri		0	7.6	5.6	8.8	13.4
5.	8.4	10.7	6.2	10.5	ri		0	1.4	3.0	7.7	10.8
6.	9.1	12.8	6.5	1.1	ri		0	11.4	3.3	5.7	9.3
7.	11.0	18.0	6.2	---			0	10.5	1.9	5.1	8.2
8.	9.8	15.0	5.8	---			0	12.7	1.5	3.1	5.1
9.	12.3	18.5	7.5	---			0	10.4	1.5	3.1	5.1
10.	9.3	17.2	7.6	---			0	3.2	2.4	5.1	8.2
11.	7.2	12.4	6.7	0.1	ri		0	7.8	3.1	4.6	8.2
12.	4.2	10.5	-0.4	1.4	ri		0	15.9	3.0	6.2	10.3
13.	4.3	8.7	-0.7	---			0	16.4	2.7	6.2	10.3
14.	6.0	9.3	0.4	---			0	15.7	2.3	4.6	7.2
15.	6.8	10.0	4.0	---			0	4.1	1.8	4.1	6.7
16.	6.4	9.7	4.3	---			0	7.5	2.0	4.6	6.7
17.	6.3	8.6	4.2	0.0			0	7.2	3.6	6.7	9.3
18.	6.6	9.2	4.5	0.1	ri		0	6.7	3.9	7.2	9.3
19.	4.3	9.5	0.7	0.6	ri		0	14.0	4.6	11.3	11.3
20.	2.9	8.0	-0.5	---			0	14.5	5.5	8.2	15.4
21.	2.0	6.2	-0.2	0.0			0	14.8	5.9	10.3	13.4
22.	1.5	4.8	-2.6	---			0	8.3	7.4	11.8	21.1
23.	2.2	6.7	1.0	0.0			0	3.4	8.3	12.4	20.6
24.	3.2	6.0	1.0	0.0			0	11.8	6.4	10.8	18.5
25.	5.0	10.7	-1.3	0.0			0	11.2	2.8	6.2	8.8
26.	5.9	9.9	3.8	0.4	sl		0	3.7	2.8	5.1	8.2
27.	6.2	10.3	2.0	5.2	ri		0	1.7	2.3	5.7	9.8
28.	6.6	9.2	5.0	0.9	ri		0	12.5	4.3	7.7	11.8
29.	6.9	10.9	4.0	0.0			0	12.8	2.3	4.1	6.2
30.	7.3	10.5	3.3	---			0	3.4	5.7	9.3	17.0
31.	9.1	11.2	6.7	1.8	ri		0	0.0	4.5	8.2	13.9

Meðalhiti	=	6.4 °C
Frávik frá meðaltali 1931-60	=	-0.6 °C
Meðalhámarkshiti	=	10.5 °C
Meðallágmarkshiti	=	3.2 °C
Úrkomumagn	=	33.3 mm
Hlutfall úrkomu af meðaltali 1931-60	=	79.0 %
Meðalvindhraði	=	3.8 m/s
Sólskinsstundir	=	272.3 klst

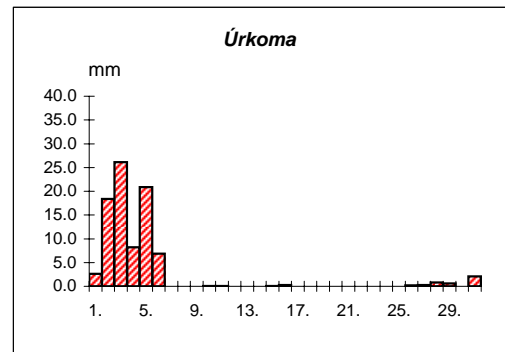
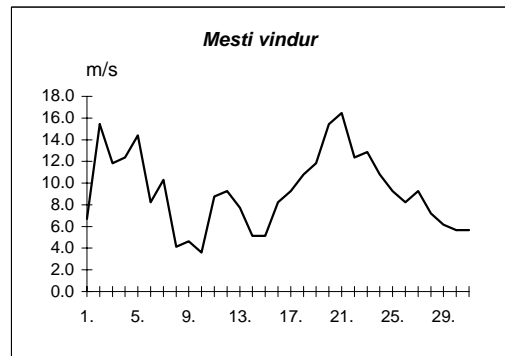
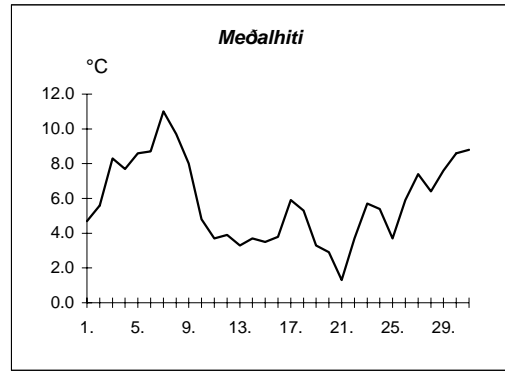


Dags	Meðalhiti (°C)	Hámark (°C)	Lágmark (°C)	Úrkoma (mm)	Úrkomutegund	Snjódýpt (cm)	Snjöhula (0-4)	Sólskin(klst)	Meðalvindur (m/s)	Mesti vindur (m/s)	Hviða (m/s)
1.	4.3	7.5	2.8	4.0	ri		0	1.8	1.8	3.6	5.1
2.	6.2	10.2	1.5	5.7	ri		0	6.2	2.9	5.7	11.3
3.	8.0	11.1	5.0	0.5	ri		0	2.1	2.5	8.2	14.4
4.	8.5	13.0	7.1	0.0			0	4.7	3.6	6.7	12.9
5.	6.2	10.2	3.2	2.3	ri		0	0.0	2.0	4.6	7.7
6.	10.8	15.9	5.4	2.7	ri		0	14.1	3.6	6.2	13.4
7.	8.1	15.6	2.3	---			0	11.2	2.1	6.2	9.3
8.	5.2	9.6	4.4	---			0	7.0	2.1	5.1	7.2
9.	4.0	6.5	1.8	0.1	ri		0	1.9	2.3	5.1	7.2
10.	5.5	8.6	3.4	0.1	ri		0	10.7	2.5	6.2	8.8
11.	2.6	8.0	-0.5	---			0	11.1	2.6	7.7	11.8
12.	2.0	4.5	0.5	0.0			0	2.2	2.5	5.1	7.7
13.	3.2	6.7	0.2	---			0	11.8	2.4	5.1	8.8
14.	4.1	9.0	-1.6	---			0	13.7	2.6	6.7	9.8
15.	4.1	7.0	2.4	0.6	ri		0	0.5	2.8	5.7	7.2
16.	5.8	8.9	2.1	---			0	2.9	2.0	4.6	9.8
17.	5.9	9.4	1.3	---			0	15.5	2.5	6.7	10.3
18.	3.5	8.2	2.3	0.9	ri		0	1.6	3.8	7.2	10.8
19.	1.6	4.8	0.0	0.0			0	2.2	3.1	6.7	10.3
20.	0.7	3.6	-0.5	0.6	sl		0	4.6	4.8	9.3	13.9
21.	-0.8	2.7	-1.6	0.9	sl		0	5.2	5.1	10.3	14.9
22.	0.0	2.0	-2.6	3.9	sn	7	2	0.0	9.0	11.8	18.0
23.	0.2	1.5	-0.3	8.0	sl	10	4	0.0	11.7	13.4	20.6
24.	0.7	2.5	0.1	8.3	sl	12	4	1.3	7.4	11.3	17.0
25.	2.8	7.6	-0.8	0.5	sl	10	2	9.4	2.1	4.6	7.2
26.	2.9	6.1	-1.8	---			0	13.5	2.4	5.1	8.2
27.	4.8	7.5	2.2	---			0	4.2	3.1	6.2	8.8
28.	4.2	7.0	3.2	0.3	ri		0	5.0	3.2	5.7	9.3
29.	6.0	10.5	-0.7	0.0			0	13.2	2.5	6.7	10.3
30.	9.1	13.4	5.4	---			0	7.6	2.3	6.7	8.8
31.	10.1	15.0	8.0	0.0			0	2.9	2.0	4.6	8.8

Meðalhiti	=	4.5 °C
Frávik frá meðaltali 1931-60	=	-1.8 °C
Meðalhámarkshiti	=	8.2 °C
Meðallágmarkshiti	=	1.8 °C
Úrkomumagn	=	39.4 mm
Hlutfall úrkomu af meðaltali 1931-60	=	263.0 %
Meðalvindhraði	=	3.4 m/s
Sólskinsstundir	=	188.1 klst



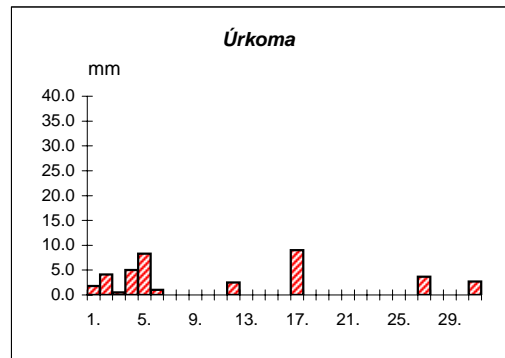
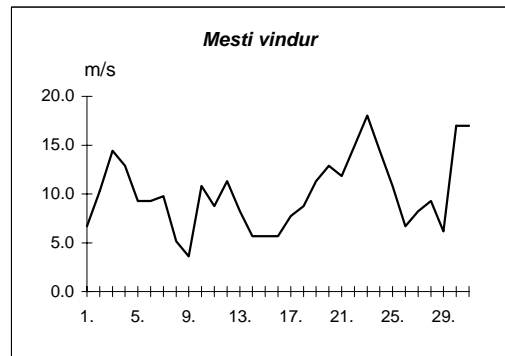
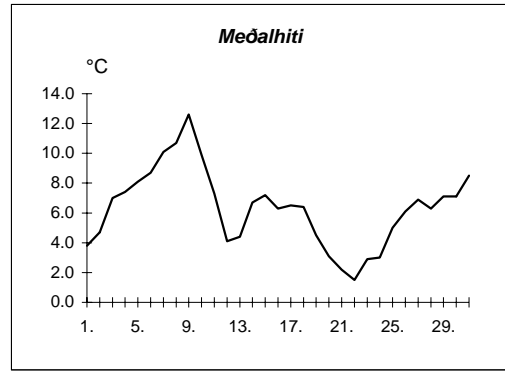
Dags	Meðalhiti (°C)	Hámark (°C)	Lágmark (°C)	Úrkoma (mm)	Úrkomutegund	Snjódýpt (cm)	Snjöhula (0-4)	Sólskin(klist)	Meðalvindur (m/s)	Mesti vindur (m/s)	Hviða (m/s)
1.	4.7	8.6	2.6	2.6	ri		0		2.1	6.7	8.2
2.	5.6	8.2	1.2	18.4	sl		0		7.4	15.4	26.8
3.	8.3	10.3	3.8	26.1	ri		0		8.8	11.8	17.5
4.	7.7	10.6	5.5	8.2	ri		0		7.1	12.4	19.0
5.	8.6	10.4	7.5	20.9	ri		0		5.8	14.4	19.6
6.	8.7	12.5	5.2	6.9	ri		0		2.4	8.2	11.8
7.	11.0	16.6	4.1	---			0		5.4	10.3	14.4
8.	9.7	16.0	3.1	---			0		1.8	4.1	5.1
9.	8.0	15.9	4.0	---			0		2.0	4.6	5.7
10.	4.8	9.1	4.6	0.1	ri		0		1.6	3.6	5.1
11.	3.7	8.1	0.7	0.1	ri		0		3.8	8.8	12.9
12.	3.9	6.5	0.4	---			0		6.0	9.3	12.4
13.	3.3	6.7	-2.5	---			0		2.7	7.7	9.8
14.	3.7	6.6	0.1	---			0		2.1	5.1	7.2
15.	3.5	7.0	0.0	0.1	ri		0		2.5	5.1	6.2
16.	3.8	7.0	-0.2	0.3	sl		0		5.4	8.2	10.3
17.	5.9	9.2	2.3	---			0		6.4	9.3	12.9
18.	5.3	8.7	3.5	---			0		5.9	10.8	13.9
19.	3.3	6.7	1.1	---			0		7.5	11.8	17.0
20.	2.9	5.7	1.3	---			0		7.7	15.4	21.6
21.	1.3	4.6	0.2	---			0		11.4	16.5	24.2
22.	3.7	7.7	-1.6	---			0		8.0	12.4	18.5
23.	5.7	8.9	2.9	---			0		8.6	12.9	16.5
24.	5.4	9.4	3.2	---			0		5.3	10.8	15.4
25.	3.7	8.1	0.6	---			0		3.6	9.3	10.8
26.	5.9	10.9	2.0	0.2	ri		0		4.8	8.2	11.3
27.	7.4	11.2	4.5	0.3	ri		0		5.8	9.3	11.8
28.	6.4	8.8	5.1	0.8	ri		0		3.0	7.2	9.3
29.	7.6	11.4	2.8	0.6	ri		0		3.0	6.2	8.8
30.	8.6	11.6	4.0	---			0		2.6	5.7	7.7
31.	8.8	10.9	6.4	2.1	ri		0		2.6	5.7	7.2



Meðalhiti	=	5.8 °C
Meðalhámarkshiti	=	9.5 °C
Meðallágmarkshiti	=	2.5 °C
Úrkomumagn	=	87.7 mm
Meðalvindhraði	=	4.9 m/s

Útgefandi : Veðurstofa Íslands  
 Heimilisfang : Bústaðavegur 9  
 150 Reykjavík

Dags	Meðalhiti (°C)	Hámark (°C)	Lágmark (°C)	Úrkoma (mm)	Úrkomutegund	Sníjódýpt (cm)	Sníjöhula (0-4)	Sólskin(klíst)	Meðalvindur (m/s)	Mesti vindur (m/s)	Hviða (m/s)
1.	3.8	7.2	1.3	1.8	sl		0		2.5	6.7	9.8
2.	4.7	10.3	0.8	4.1	sl		0		5.6	10.3	13.9
3.	7.0	10.8	5.1	0.5	ri		0		8.5	14.4	18.5
4.	7.4	11.6	5.2	5.0	ri		0		6.7	12.9	15.4
5.	8.1	11.0	5.4	8.3	ri		0		4.8	9.3	11.3
6.	8.7	12.4	5.4	1.0	ri		0		4.6	9.3	12.4
7.	10.1	15.2	5.5	---			0		4.9	9.8	12.9
8.	10.7	15.5	6.2	---			0		2.5	5.1	6.7
9.	12.6	17.7	7.2	---			0		2.4	3.6	5.1
10.	9.9	15.6	7.1	---			0		4.7	10.8	13.9
11.	7.3	13.0	7.0	0.0			0		5.7	8.8	10.8
12.	4.1	9.7	1.2	2.5	ri		0		6.8	11.3	13.9
13.	4.4	7.7	0.4	---			0		5.4	8.2	10.3
14.	6.7	9.8	3.5	---			0		3.3	5.7	10.8
15.	7.2	10.1	4.4	---			0		2.2	5.7	8.2
16.	6.3	9.6	5.0	0.0			0		1.6	5.7	7.7
17.	6.5	8.4	3.2	9.0	ri		0		3.8	7.7	10.3
18.	6.4	8.7	5.0	0.0			0		6.5	8.8	12.4
19.	4.5	7.9	3.3	---			0		7.9	11.3	14.4
20.	3.1	6.2	0.8	---			0		9.8	12.9	17.0
21.	2.2	5.0	0.7	---			0		8.0	11.8	15.4
22.	1.5	4.1	-1.5	---			0		11.4	14.9	20.1
23.	2.9	5.6	1.3	0.0			0		14.3	18.0	21.1
24.	3.0	8.3	0.9	---			0		11.5	14.4	18.0
25.	5.0	8.5	0.9	---			0		5.8	10.8	14.4
26.	6.1	9.5	4.3	0.0			0		3.7	6.7	8.8
27.	6.9	9.8	4.3	3.7	ri		0		5.4	8.2	10.3
28.	6.3	9.2	4.9	0.0			0		6.7	9.3	13.4
29.	7.1	10.1	2.9	---			0		3.2	6.2	10.8
30.	7.1	9.5	3.7	---			0		10.2	17.0	23.2
31.	8.5	9.8	7.1	2.7	ri		0		7.8	17.0	23.2



Meðalhiti	=	6.3 °C
Frávik frá meðaltali 1931-60	=	-0.2 °C
Meðalhámarkshiti	=	9.9 °C
Meðallágmarkshiti	=	3.6 °C
Úrkomumagn	=	38.6 mm
Hlutfall úrkomu af meðaltali 1931-60	=	64.0 %
Meðalvindhraði	=	6.1 m/s