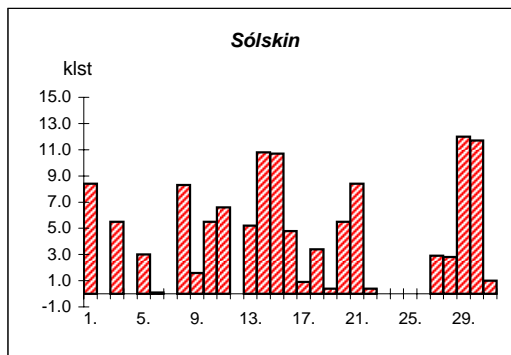
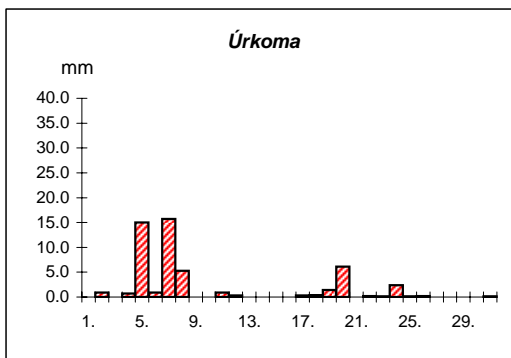
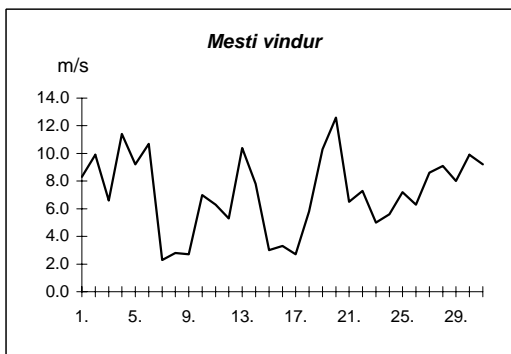
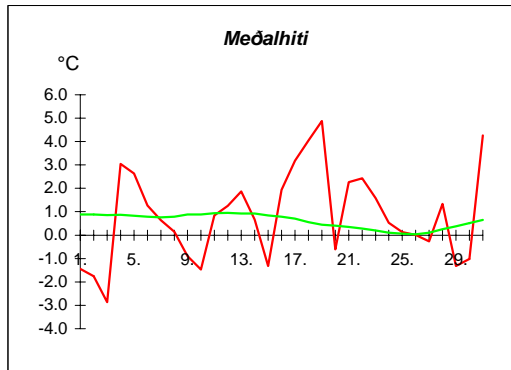


Reykjavík mars 2008

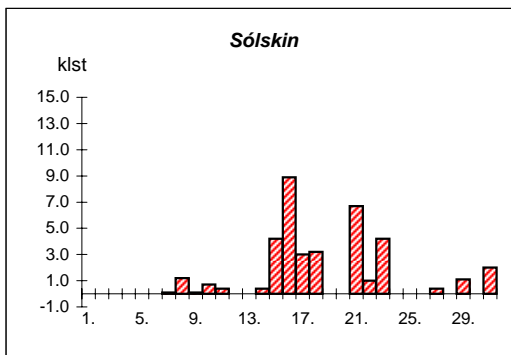
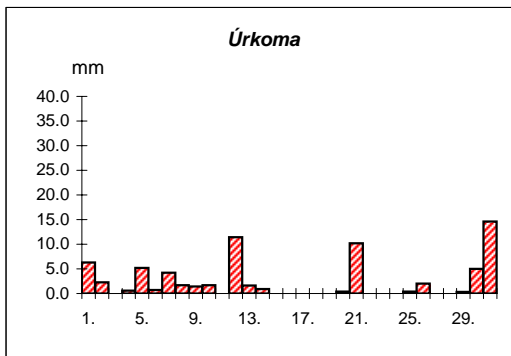
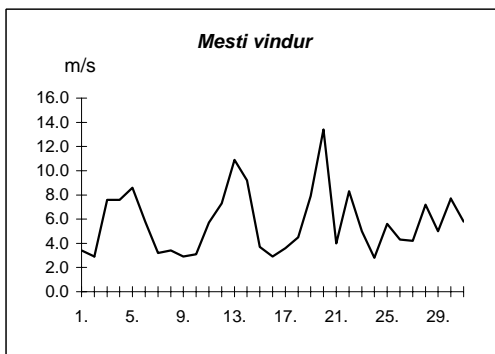
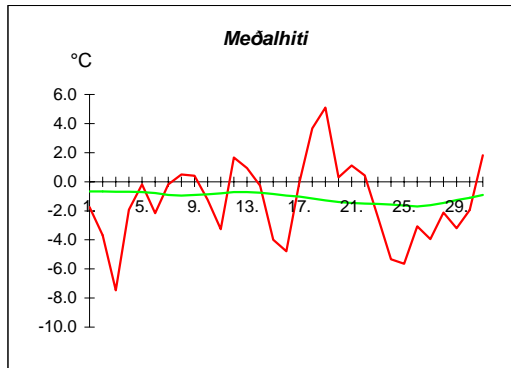
Dags	Meðalhiti (°C)	Hámark (°C)	Lágmark (°C)	Úrkoma (mm)	Úrkomutegund	Sníjóþpt (cm)	Sníjóhula (0-4)	Sólskín(klst)	Meðalvindur (m/s)	Mesti vindur (m/s)	Hviða (m/s)
1.	-1.4	0.5	-2.7			14	4	8.4	3.1	8.3	15.5
2.	-1.8	-0.5	-4.4	0.9	sn	13	4	0.0	6.2	9.9	17.1
3.	-2.9	0.5	-3.4	0.0	sl	12	4	5.5	3.1	6.6	11.5
4.	3.1	6.6	-6.0	0.7	sl	12	4	0.0	7.0	11.4	19.0
5.	2.6	6.4	1.3	15.0	sl		2	3.0	3.8	9.2	17.1
6.	1.3	3.8	0.7	0.9	sl	4	2	0.1	4.9	10.7	19.5
7.	0.6	2.5	-0.1	15.7	sl	10	4	0.0	0.5	2.3	3.5
8.	0.2	3.5	-1.7	5.3	sn	8	4	8.3	0.8	2.8	3.7
9.	-0.9	3.1	-3.6			7	4	1.6	1.2	2.7	4.5
10.	-1.5	1.2	-3.7	0.0	sn	7	4	5.5	3.5	7.0	11.3
11.	0.8	2.8	-1.1	0.9	sn	7	4	6.6	4.0	6.3	10.1
12.	1.3	3.2	-1.0	0.3	sn	7	4	0.0	1.9	5.3	9.3
13.	1.9	4.7	-1.0	0.0	sn	6	2	5.2	5.2	10.4	18.0
14.	0.7	4.3	-1.4	0.0	sn	2	2	10.8	2.6	7.8	13.4
15.	-1.3	3.7	-5.0				2	10.7	1.3	3.0	4.7
16.	1.9	6.5	-3.4				2	4.8	1.7	3.3	4.6
17.	3.2	5.8	1.3	0.3	ri		0	0.9	1.1	2.7	5.1
18.	4.0	6.9	2.1	0.4	ri		0	3.4	3.0	5.8	8.2
19.	4.9	6.8	4.2	1.4	ri		0	0.4	6.6	10.3	16.1
20.	-0.6	5.1	-2.5	6.1	sl		0	5.5	7.3	12.6	20.6
21.	2.3	5.0	-1.8	0.0	sn		0	8.4	2.3	6.5	9.7
22.	2.4	4.2	0.4	0.2	ri		0	0.4	3.3	7.3	11.1
23.	1.6	3.5	-0.4	0.1	ri		0	0.0	2.1	5.0	7.2
24.	0.5	3.3	-0.7	2.4	sl	1	2	0.0	3.8	5.6	8.7
25.	0.1	1.1	-1.0	0.1	sn	1	2	0.0	5.5	7.2	12.0
26.	0.0	1.8	-1.3	0.2	sn	1	2	0.0	4.8	6.3	11.2
27.	-0.3	1.4	-2.3	0.0	sn		0	2.9	5.0	8.6	15.9
28.	1.3	4.6	0.3	0.0	sn		0	2.8	6.4	9.1	14.5
29.	-1.3	2.3	-4.4				0	12.0	3.6	8.0	12.8
30.	-1.0	2.1	-4.5				0	11.7	4.7	9.9	17.1
31.	4.3	7.4	-1.5	0.1	sn		0	1.0	5.9	9.2	15.8

Meðalhiti	=	0.8 °C
Frávik frá meðaltali 1961-90	=	0.3 °C
Meðalhámarkshiti	=	3.7 °C
Meðallágmarkshiti	=	-1.6 °C
Úrkomumagn	=	51.0 mm
Hlutfall úrkomu af meðaltali 1961-90	=	62.2 %
Meðalvindhraði	=	3.7 m/s
Sólskinsstundir	=	119.9 klst

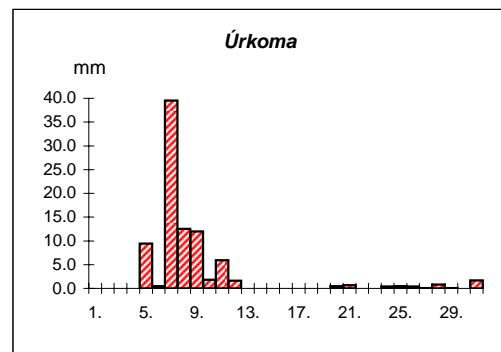
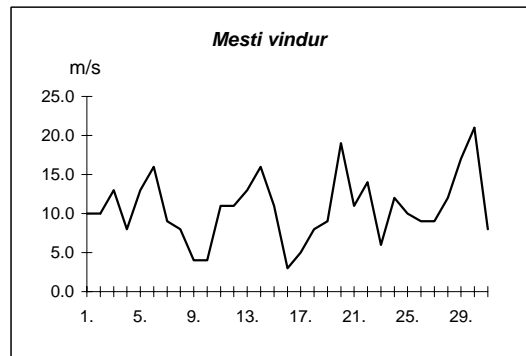
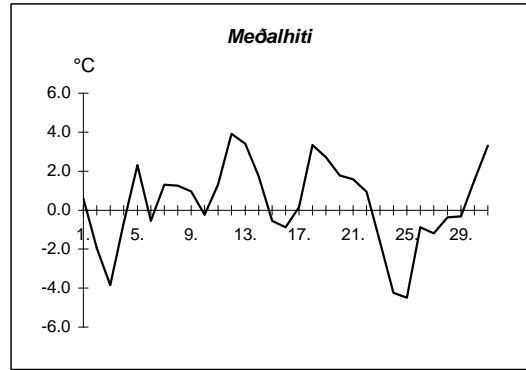


Dags	Meðalhiti (°C)	Hámark (°C)	Lágmark (°C)	Úrkoma (mm)	Úrkomutegund	Sníjóþpt (cm)	Sníjöhula (0-4)	Sólskin(klst)	Meðalvindur (m/s)	Mesti vindur (m/s)	Hviða (m/s)
1.	-1.8	0.7	-4.3	6.3	sn	24	4	0.0	1.4	3.4	7.7
2.	-3.7	-0.5	-4.5	2.3	sn	25	4	0.0	1.1	2.9	5.8
3.	-7.5	-2.5	-8.2	0.0	sn	25	4	0.0	2.9	7.6	12.3
4.	-1.9	3.5	-12.8	0.6	sl	25	4	0.0	3.7	7.6	15.0
5.	-0.2	8.6	-2.1	5.2	sn	20	4	0.0	2.7	8.6	16.5
6.	-2.2	4.0	-4.0	0.7	sn	20	4	0.0	2.1	5.8	10.7
7.	-0.2	0.7	-2.8	4.2	sn	23	4	0.1	1.1	3.2	6.2
8.	0.5	2.0	-0.7	1.7	sl	23	4	1.2	1.6	3.4	5.0
9.	0.4	2.0	0.1	1.4	sl	24	4	0.1	1.1	2.9	4.3
10.	-1.3	2.0	-3.1	1.7	sn	25	4	0.7	1.4	3.1	4.9
11.	-3.3	1.0	-7.2			20	4	0.4	2.2	5.7	8.6
12.	1.7	3.8	-2.0	11.4	sl	25	4	0.0	3.9	7.3	12.6
13.	0.9	3.0	0.9	1.6	sl	17	4	0.0	8.1	10.9	15.0
14.	-0.3	1.5	-0.2	0.9	sl	14	4	0.4	5.0	9.2	13.8
15.	-4.0	-0.2	-3.6			12	4	4.2	2.2	3.7	6.5
16.	-4.8	1.6	-9.8			12	4	8.9	1.3	2.9	4.5
17.	-0.1	6.2	-7.3			12	4	3.0	1.6	3.6	6.7
18.	3.7	6.2	2.1			10	4	3.2	2.7	4.5	7.9
19.	5.1	7.8	2.3	0.0	ri		2	0.0	3.8	7.9	13.0
20.	0.3	7.8	-2.5	0.4	sn		2	0.0	6.5	13.4	22.5
21.	1.1	4.3	0.0	10.2	sl		2	6.7	1.6	4.0	8.7
22.	0.4	4.5	-1.3				2	1.0	2.9	8.3	12.6
23.	-2.4	1.2	-5.0				2	4.2	1.8	5.0	8.7
24.	-5.3	-1.0	-5.6				2	0.0	1.4	2.8	7.4
25.	-5.6	-4.1	-7.2	0.4	sn		2	0.0	2.3	5.6	10.8
26.	-3.1	-0.7	-5.4	2.0	sn	6	4	0.0	1.9	4.3	12.7
27.	-3.9	-1.2	-6.6	0.0	sn	6	4	0.4	1.6	4.2	8.7
28.	-2.1	-0.3	-3.4	0.0	sn	4	4	0.0	2.6	7.2	14.6
29.	-3.2	-0.5	-3.7	0.3	sn	4	4	1.1	2.4	5.0	10.7
30.	-1.9	-0.1	-5.0	5.0	sn	10	4	0.0	4.5	7.7	12.5
31.	1.8	5.4	-0.4	14.6	sl		2	2.0	2.0	5.8	13.1

Meðalhiti	=	-1.4 °C
Frávik frá meðaltali 1961-90	=	-0.1 °C
Meðalhámarkshiti	=	2.2 °C
Meðallágmarkshiti	=	-3.7 °C
Úrkomumagn	=	70.9 mm
Hlutfall úrkomu af meðaltali 1961-90	=	164.9 %
Meðalvindhraði	=	2.6 m/s
Sólskinsstundir	=	37.6 klst



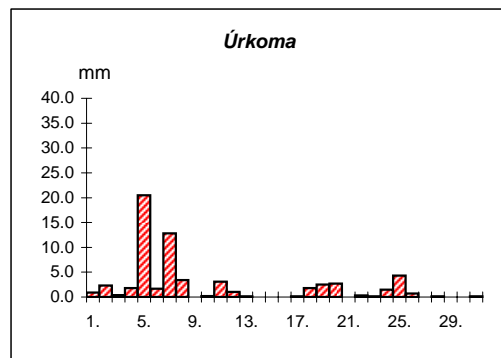
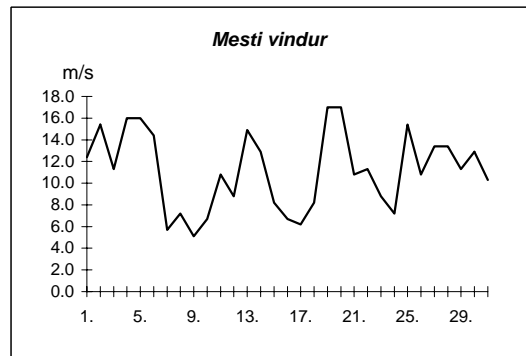
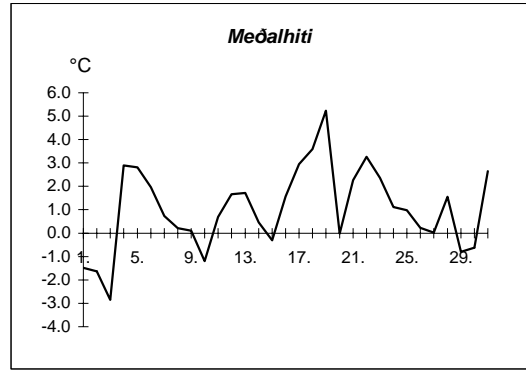
Dags	Meðalhiti (°C)	Hámark (°C)	Lágmark (°C)	Úrkoma (mm)	Úrkomutegund	Snjódýpt (cm)	Snjöhula (0-4)	Sólskini(klst)	Meðalvindur (m/s)	Mesti vindur (m/s)	Hviða (m/s)
1.	0.6	3.2	-0.6	0.0	sn	11	4		6.2	10.0	
2.	-2.0	2.0	-3.6				2		5.7	10.0	
3.	-3.9	-1.4	-5.2	0.0	sn		2		10.0	13.0	
4.	-0.7	1.7	-6.2				2		4.3	8.0	
5.	2.3	7.4	-0.6	9.4	sl		0		9.3	13.0	
6.	-0.6	1.3	-2.5	0.5	sn		2		10.4	16.0	
7.	1.3	3.7	-0.6	39.5	sl		2		3.8	9.0	
8.	1.3	4.3	0.4	12.5	sl		2		1.9	8.0	
9.	1.0	4.2	-0.6	12.0	sn	5	4		2.3	4.0	
10.	-0.2	3.5	-1.7	1.8	sl	5	4		2.7	4.0	
11.	1.3	4.1	-2.7	5.9	sl	7	4		6.3	11.0	
12.	3.9	7.5	1.8	1.6	ri		2		6.3	11.0	
13.	3.4	4.9	2.5	0.0	ri		2		9.9	13.0	
14.	1.7	3.6	0.8				2		14.3	16.0	
15.	-0.6	3.2	-2.5				2		4.6	11.0	
16.	-0.9	4.5	-4.2				2		2.3	3.0	
17.	0.1	4.6	-3.7				2		3.0	5.0	
18.	3.3	6.8	-1.4				2		4.3	8.0	
19.	2.7	7.1	-0.6				2		3.6	9.0	
20.	1.8	6.0	-0.8	0.5	ri		2		11.8	19.0	
21.	1.6	5.3	0.8	0.7	ri		2		8.4	11.0	
22.	1.0	5.5	-2.0				2		8.0	14.0	
23.	-1.6	1.3	-3.5				2		3.2	6.0	
24.	-4.2	0.0	-4.6	0.4	sn		2		9.6	12.0	
25.	-4.5	-3.0	-6.2	0.5	sn	1	4		4.5	10.0	
26.	-0.9	1.9	-4.2	0.4	sn	1	4		6.3	9.0	
27.	-1.2	1.0	-2.6	0.1	sn		2		7.5	9.0	
28.	-0.4	2.0	-2.8	0.8	sn		2		8.4	12.0	
29.	-0.3	2.6	-2.1	0.1	sn		2		11.7	17.0	
30.	1.5	4.8	-2.8	0.0	ri		2		13.8	21.0	
31.	3.3	6.6	2.2	1.7	ri		2		5.0	8.0	



Meðalhiti	=	0.3 °C
Meðalhámarkshiti	=	3.6 °C
Meðallágmarkshiti	=	-1.9 °C
Úrkomumagn	=	88.4 mm
Meðalvindhraði	=	6.7 m/s

Útgefandi : Veðurstofa Íslands
 Heimilisfang : Bústaðavegur 9
 150 Reykjavík

Dags	Meðalhiti (°C)	Hámark (°C)	Lágmark (°C)	Úrkoma (mm)	Úrkomutegund	Snjóþýpt (cm)	Snjóhula (0-4)	Sólskín(klst)	Meðalvindur (m/s)	Mesti vindur (m/s)	Hviða (m/s)
1.	-1.5	1.1	-2.5	0.9	sn	20	4		4.6	12.4	15.4
2.	-1.6	-0.5	-4.7	2.3	sn	13	4		10.9	15.4	19.0
3.	-2.9	0.0	-3.3	0.4	sn	15	4		6.6	11.3	14.9
4.	2.9	5.8	-6.1	1.8	sl	13	4		11.1	16.0	22.1
5.	2.8	8.4	1.5	20.5	sl		2		6.6	16.0	22.1
6.	2.0	3.4	0.6	1.7	sl		2		7.3	14.4	21.6
7.	0.7	6.4	0.3	12.8	sl	3	4		2.2	5.7	6.7
8.	0.2	2.3	-2.5	3.4	sn	1	4		4.3	7.2	9.8
9.	0.1	1.4	-2.0	0.0	sn	1	4		3.5	5.1	6.7
10.	-1.2	3.0	-4.6	0.2	sn		2		3.1	6.7	10.3
11.	0.7	3.2	-1.6	3.1	sn	9	4		5.3	10.8	13.9
12.	1.7	2.9	-1.4	1.0	sl	6	4		4.7	8.8	11.3
13.	1.7	3.3	1.2	0.1	ri		2		10.3	14.9	18.5
14.	0.5	2.8	0.3	0.0	ri		2		9.3	12.9	16.0
15.	-0.3	3.4	-1.5				2		3.6	8.2	10.8
16.	1.6	5.0	-3.1				2		3.9	6.7	8.2
17.	3.0	5.9	1.3	0.1	ri		2		3.7	6.2	7.7
18.	3.6	6.0	1.2	1.8	ri		2		5.6	8.2	10.3
19.	5.2	6.6	2.9	2.5	ri		2		11.1	17.0	22.1
20.	0.0	5.7	-2.1	2.7	sl		2		11.5	17.0	22.7
21.	2.3	4.4	-1.5	0.0	sn		2		5.0	10.8	13.4
22.	3.3	5.0	0.7	0.3	sl		2		6.0	11.3	13.9
23.	2.4	4.5	0.4	0.1	ri		2		4.4	8.8	11.3
24.	1.1	4.9	0.8	1.5	sl		0		4.5	7.2	9.3
25.	1.0	1.9	0.0	4.3	sl		0		8.7	15.4	21.1
26.	0.2	5.2	-0.8	0.7	sl		2		7.5	10.8	13.9
27.	0.0	2.4	-1.7	0.0	sn		0		7.3	13.4	17.5
28.	1.6	3.6	-0.3	0.1	sn		0		9.9	13.4	17.0
29.	-0.8	2.6	-2.6				0		8.1	11.3	14.4
30.	-0.6	2.0	-4.2				0		9.3	12.9	17.0
31.	2.7	6.4	-1.6	0.1	sn		2		6.5	10.3	13.4



Meðalhiti	=	1.0 °C
Frávik frá meðaltali 1961-90	=	0.3 °C
Meðalhámarkshiti	=	3.8 °C
Meðallágmarkshiti	=	-1.2 °C
Úrkomumagn	=	62.4 mm
Hlutfall úrkomu af meðaltali 1961-90	=	62.3 %
Meðalvindhraði	=	6.7 m/s